



SC043156

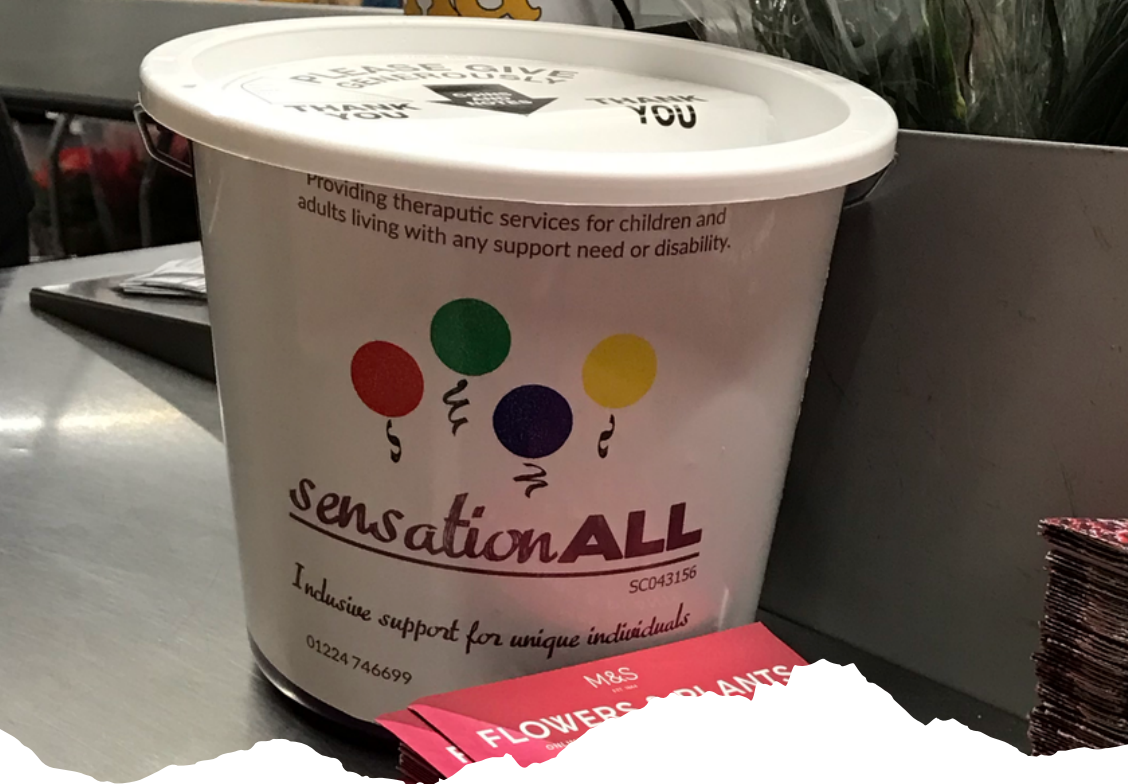
# FUNDRAISING PACK

supporting children & adults with support needs and disabilities

---

[www.sensationall.org.uk](http://www.sensationall.org.uk)

# SUPPORT SENSATIONALL



SensationALL provide therapy-based services and activities for children & adults with **any support need or disability**.

Donations to our charity enable families to access specialist sensory facilities and beneficial activities in a safe place where **they feel they belong** and can be themselves.

We aim to **empower** families by equipping them with the knowledge and practical techniques they need to address the life-long challenges of complex conditions.

Every penny raised for us is spent on supporting families in the North East of Scotland.

We receive no government funding and rely solely on private donations from individuals and organisations.

# YOUR MONEY COULD...



**£20**

buy a week's supply of baking ingredients for our groups



**£40**

buy a month's supply of craft materials



**£106**

fund a stay & play session for up to 8 children with multiple support needs and their families

**£120**

pay for an outing for our teenage social group



**£1000**

purchase sensory equipment



**£3600**

cover the cost of our summer holiday programme





## bake sale

a tried and tested way to fundraise...  
organise a bake sale at work, school  
or home - everyone loves cake!



## sponsored activity

walk, run, cycle, give something up or take  
on a challenge all in aid of sensationALL



## charity of the year

nominate us to be your work,  
school or organisation's charity



## sensationALL events

we have our own calendar of events that you can  
take part in or support - check out our website or  
Facebook page for full details



# GET IN TOUCH

Tell us what you're planning and we will help by supplying collection buckets, posters & banners and even branded t-shirts.

We are happy to come along for presentations or lunch n' learns for your workplace, school or organisation to give more information on the families we support and the difference your fundraising will make.



**CALL US**  
**01224 465203**



**EMAIL**  
**events@sensationall.org.uk**

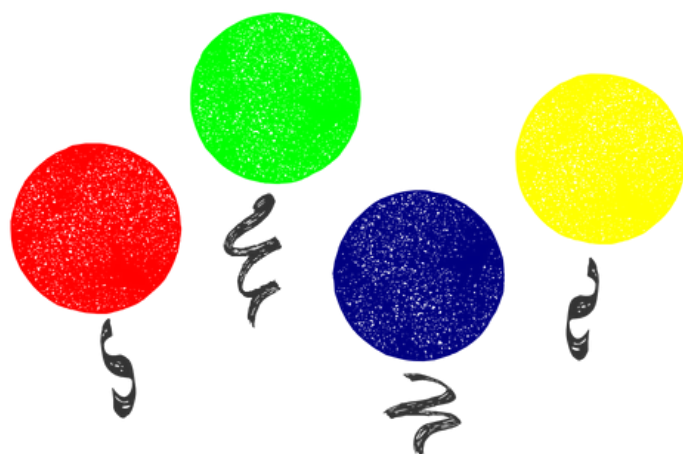


**www.sensationall.org.uk**



**The Old Schoolhouse, Westhill Road, Westhill, AB32 6FT**





*sensation***ALL**

---

SC043156